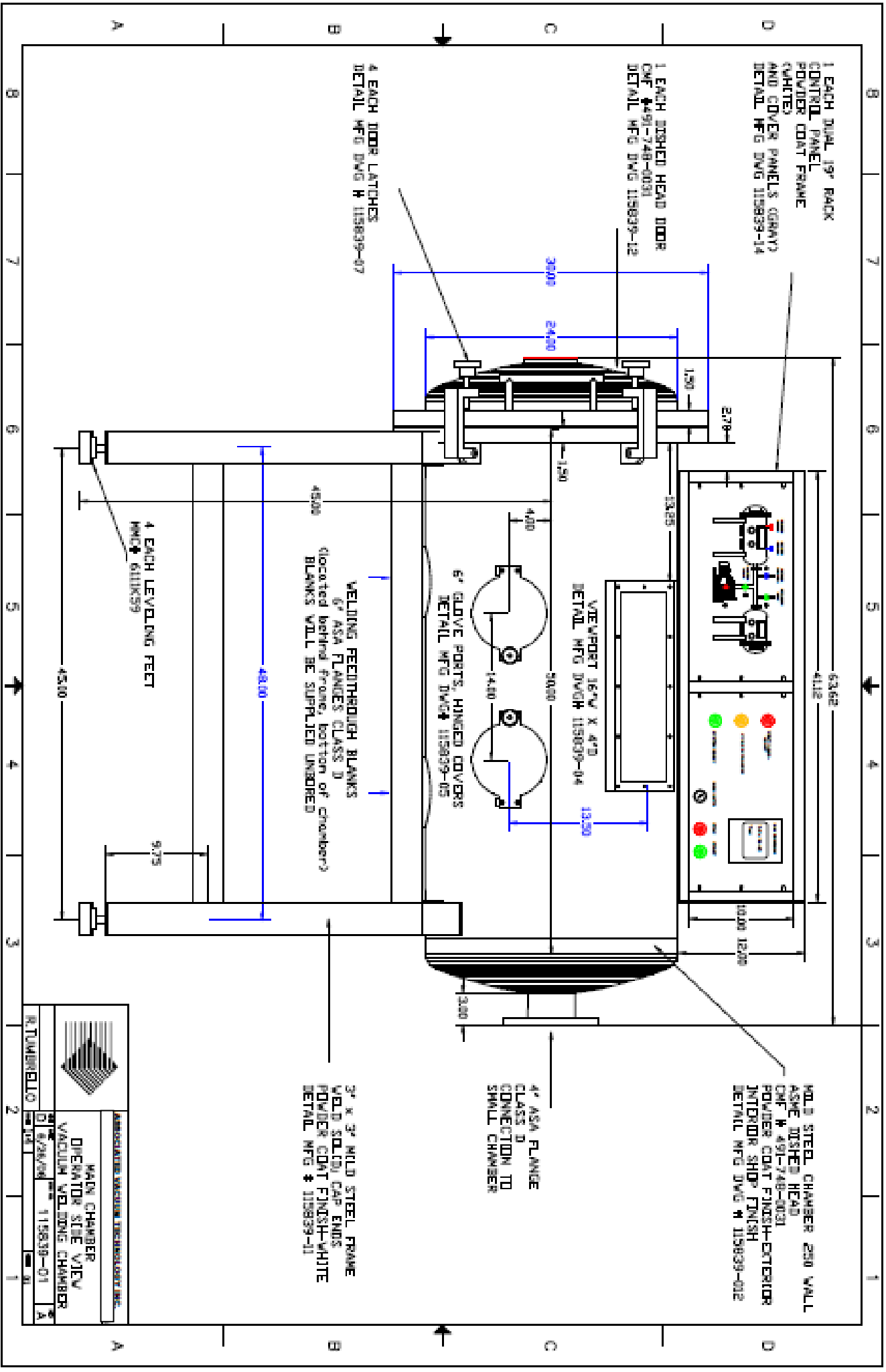


VGB SERIES - VACUUM GLOVE BOX

- *24" TO 36" DIA, POWDER COATED MILD STEEL CONSTRUCTION*
- *PLC CONTROLLED WITH LARGE COLORFUL INDUSTRIAL SWITCHES FOR MANUAL OVERRIDE*
- *PRECISION BEARING , MULTI AXIS HINDGE*
- *VACUUM SEALED GLOVE PORTS*
- *"C" TYPE, CHAMBER DOOR LATCHES*
- *SHOWN WITH OPTIONAL SMALL COMPANION BOX*

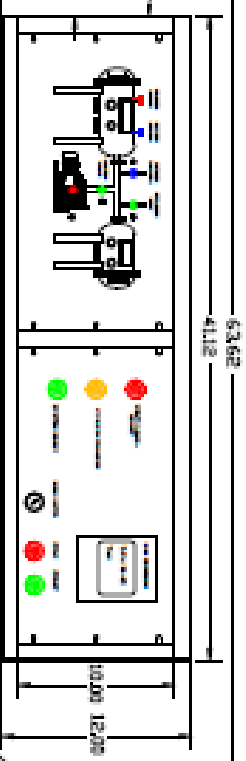




1 EACH DUAL 19" RACK
CONTROL PANEL
POWDER COAT FRAME
(WHITE)
AND COVER PANELS (GRAY)
DETAIL MFG DWG 115839-14

1 EACH DISHED HEAD DOOR
CNF # 4491-748-0031
DETAIL MFG DWG 115839-12

4 EACH DOOR LATCHES
DETAIL MFG DWG H 115839-07



VIEWPORT 16"V X 4"D
DETAIL MFG DWG# 115009-04

6" GLOVE PORTS, HINGED COVERS
DETAIL MFG DWG# 115839-05

WELDING REEDTHROUGH BLANKS
6" ASA FLANGES CLASS D
(located behind frame, bottom of chamber)
BLANKS WILL BE SUPPLIED UNBORED

4 EACH LEVELING FEET
MNC# 6111K59

MIL.3 STEEL CHAMBER 250 WALL
ASME DISHED HEAD
CNF # 4491-748-0031
POWDER COAT FINISH-EXTERIOR
INTERIOR SHIP FINISH
DETAIL MFG DWG # 115839-012

4" ASA FLANGE
CLASS D
CONNECTION TO
SMALL CHAMBER

3" X 3" MILD STEEL FRAME
WELD SOLID CAP ENDS
POWDER COAT FINISH-WHITE
DETAIL MFG # 115839-011

ASSOCIATED VACUUM TECHNOLOGY INC.	
MAIN CHAMBER OPERATOR SIDE VIEW VACUUM WELDING CHAMBER	
DATE: 01/28/2020	SCALE: 115839-01
BY: [Signature]	APP: [Signature]
REV: 01	REV: A